

Leveraging AI for Greater RADV-OIG Compliance and Reduced Provider Abrasion

Presented By:

Deniese Crittenden

VP, Risk Adjustment Strategy & Solutions

Reveleer

Webinar Participant Tips

All participant lines are muted. To protect your privacy, you will only see your name and the presenters names in the participant box.

To submit a question to the presenters any time during the event:



In the Event window, in the Panels drop-down list, select Q & A



Type your question in the Q & A box



Click "Send"

Speaker



Deniese Crittenden

RN, MSN, MHA, BSW, CRC

VP, Risk Adjustment Strategy & Solutions

Reveleer

Today's Topics

1

How to Collaborate with Payer Provider Partners and Vendors

2

Developing a system of checks and balances

3

Optimizing member care and health outcomes

The OIG's Role

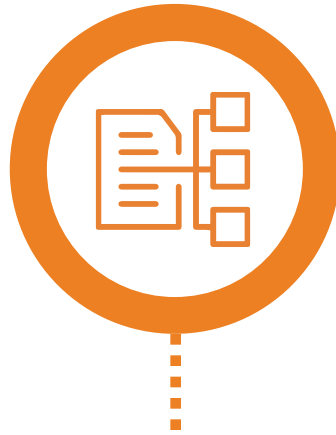
Reduce Fraud Waste & Abuse



Targeted validation audits to ensure the validity of select HCC's known to have higher error rates in clinical documentation



Health plans will be selected by region and size.



7 High-risk categories:

- Cancer
- Acute Stroke
- Myocardial Infarction
- Major Depressive Disorder
- Embolism
- Vascular Claudication
- Mis-keyed Diagnoses

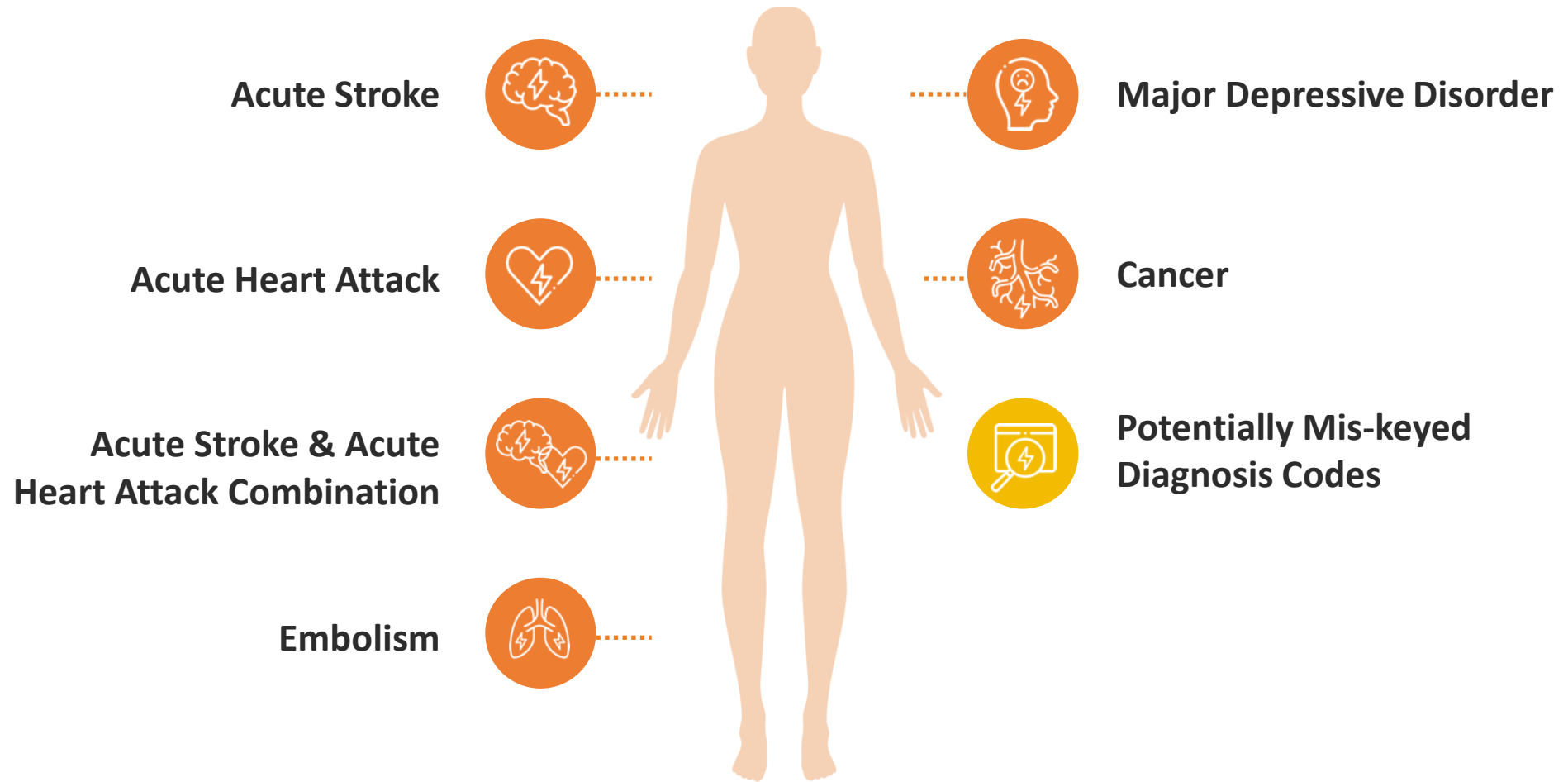


No extrapolated penalties until 2018, then extrapolated penalties with no FFS adjuster



Removal of Stratified Random Sample of 200 enrollees; rather, statistically valid sampling

OIG High Risk Diagnosis Groups



Errors In High-Risk Group as of Nov 2023

High-Risk Group	Total	Errors	Error %
Acute stroke	945	908	96%
Acute heart attack	791	751	95%
Embolism	754	593	79%
Lung cancer	391	345	88%
Breast cancer	390	373	96%
Colon cancer	390	368	94%
Prostate cancer	360	322	89%
Potentially mis-keyed diagnosis codes	522	421	81%
Totals	4,543	4,081	90%

Impact on Health Plan-Provider Relationships



Increased administrative burden



Retrospective reviews to ensure compliance with claims submissions



Provider education and CDI programs



Changes to business model & operations to manage both V24 & V28

- Tighter vendor management
- Shift to coordinated care model to improve continuity of care



Improved support of clinical workflows – APIs and Interoperability

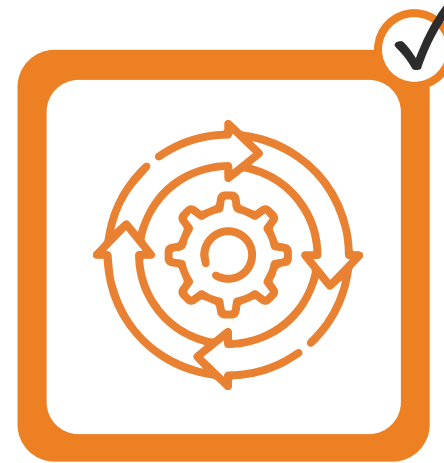
Mitigating Risk With Best Practices



Data & Analytics



Technology

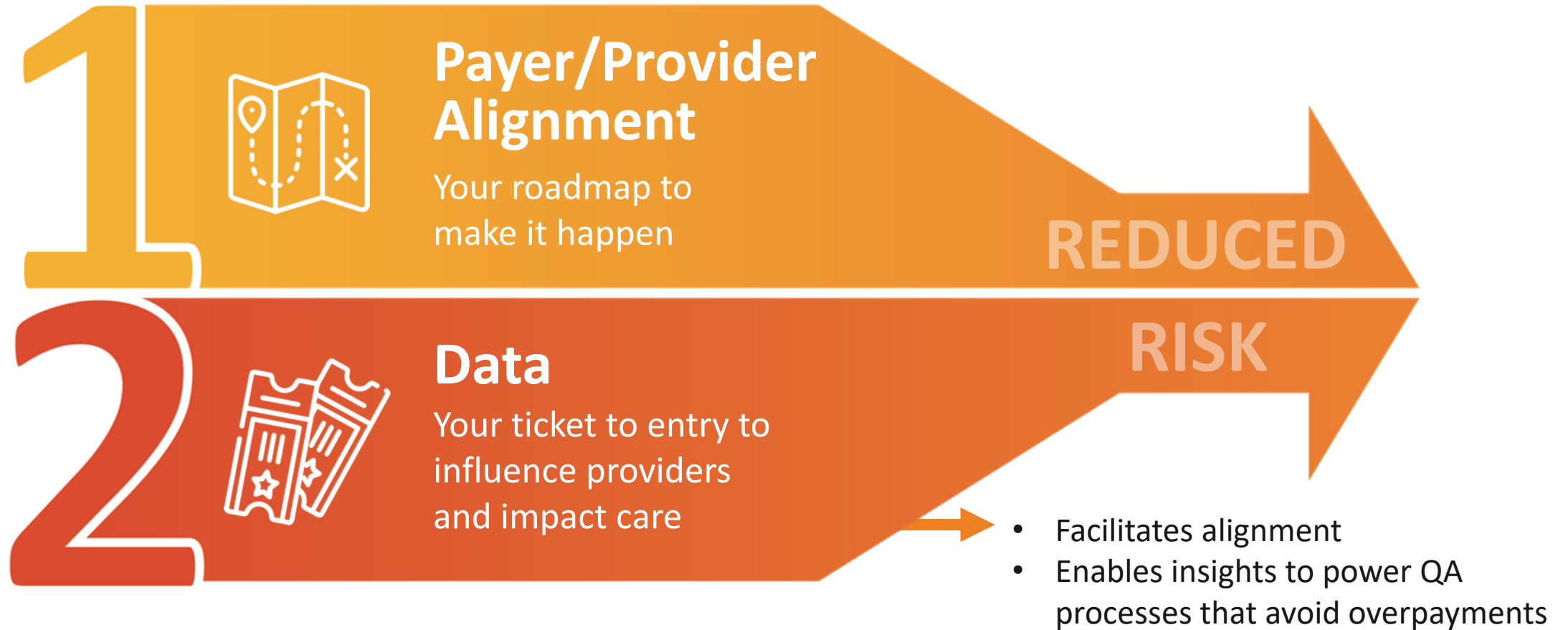


**Process &
Workflow**



**Compliance
Policies &
Procedure**

A Dual-Path Approach to Reducing Risk



Data Challenges in Value-Based Care

DATA LOCKED



Health plans have more data than providers but it is traditionally locked in silos

FRUSTRATED PROVIDERS



Data shared with providers is typically outdated and irrelevant, frustrating providers

LOCATING MEMBERS











Member attributions-knowing where your members are so you can engage

PERFORMANCE CAP



3% performance cap on risk adjustment

Making Data Work For Value-Based Care

 Data Needs In Value-based Care	 Tools & Approaches To Get There
 A more comprehensive and updated view of the member	 Connections with disparate health data such as HIEs, pharmacies, etc.
 Ability to manage massive amounts of data into actionable insights	 AI to sort, collate and transform
 Actionable insights that can impact care	 Integrations to drive insights into provider workflows / EHRs

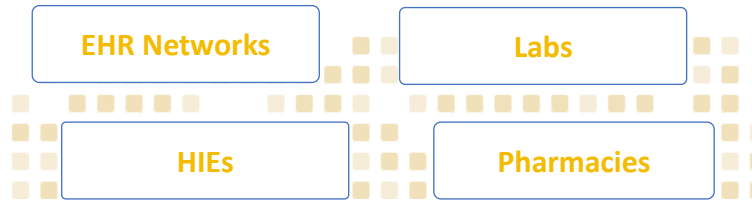
From Data to Clinical Insights

Structured and unstructured data are ingested and cleaned, then AI algorithms extract critical value and insights



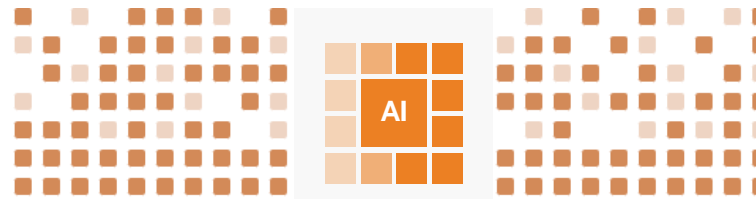
Structured & Unstructured Data

Ingest, store and streamline clinical and claims data from multiple sources and format



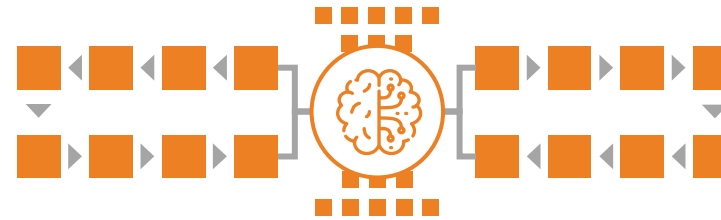
Advanced NLP & ML

Perform Risk Adjustment and Quality review via proprietary algorithms



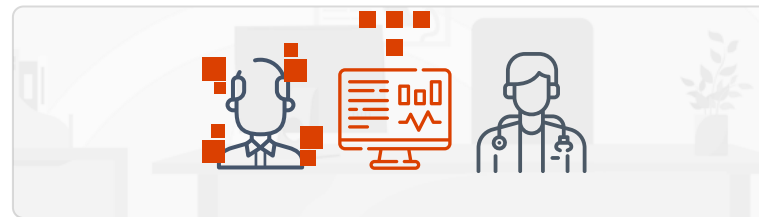
AI-Driven Workflow

Perform every aspect of chart retrieval, coding, review and submission through automated processes



Health Data Management

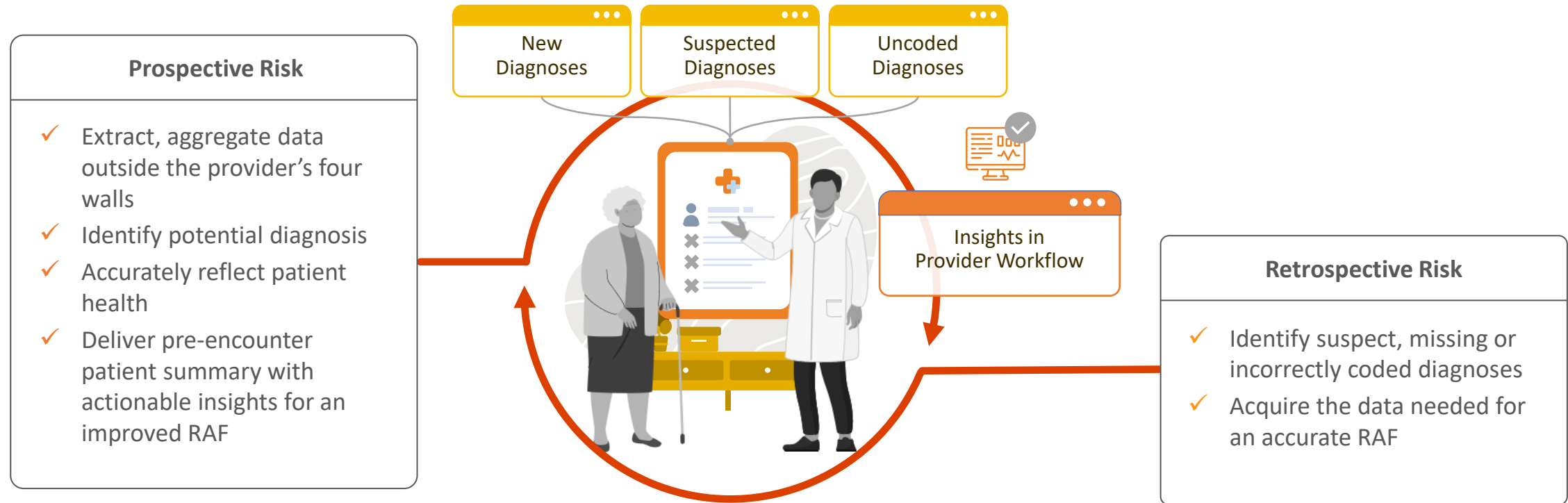
Member / Patient risk stratification for health plans and providers to develop accurate profile for appropriate reimbursement and care



Prospective Risk Re-defined

A 360-Degree View of Member Risk

Transforming risk adjustment into a proactive, strategic capability to improve member care



Payer/Provider Relationships Built to Succeed

Start with your areas of **COMMON GROUND**

- Member health
- CMS compliance



Build a culture of **COLLABORATION**

- Change perceptions of “chasing codes”
- Position gap closure to improve member health

Provider Engagement Strategy



Using analytics to understand your populations



Present targeted charts for provider review



Understand and support provider coding capabilities



Engage and educate specialists

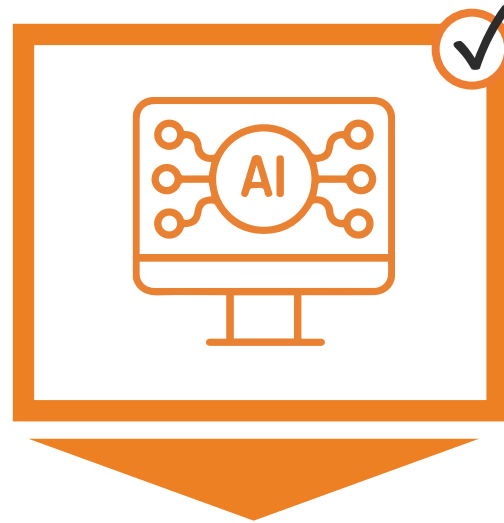


Combine Risk and Quality for provider outreach

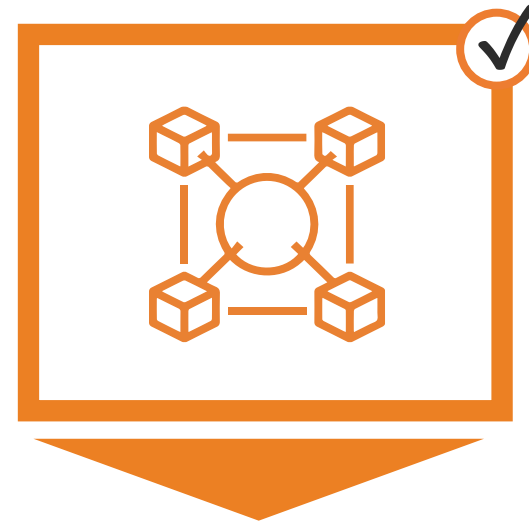
Tools to Manage the New Reality



Larger data sets: charts, vendor reviews, lab results, etc.

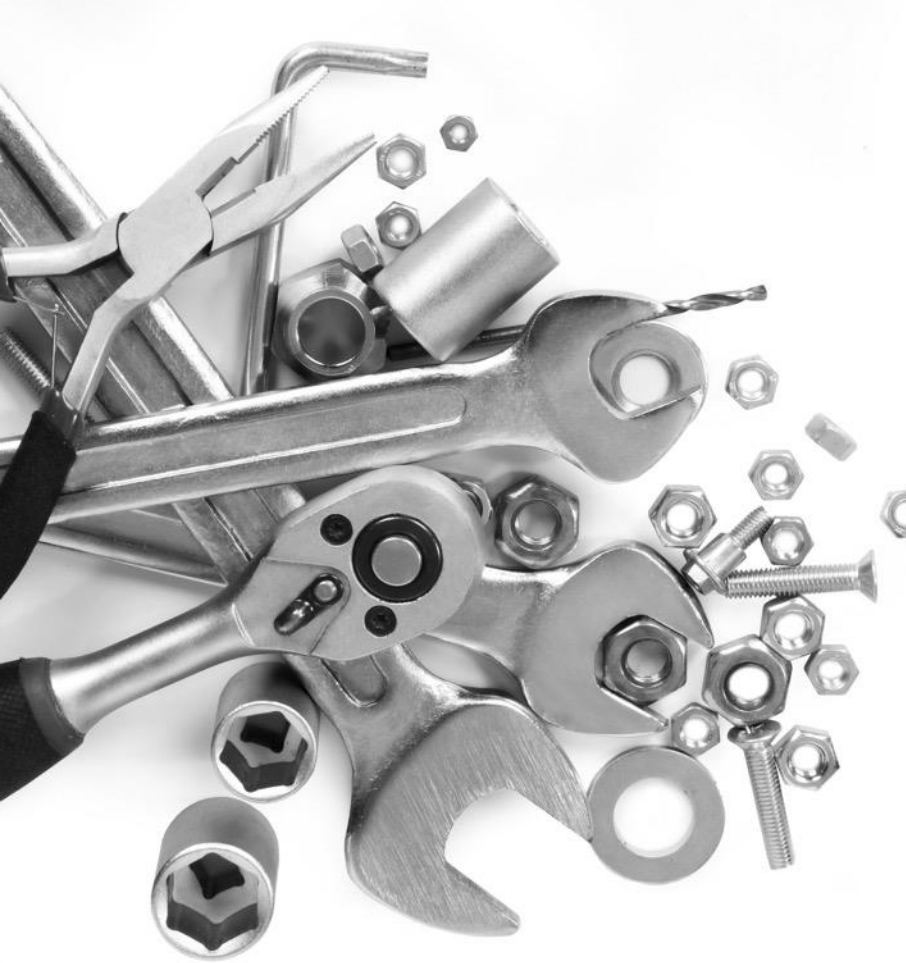


Leverage AI to assist



Interoperability to get data to the point-of-care more effectively, efficiently

OIG Toolkit



- **GUIDE TO ASSIST** with data mining, analytics and structured query language
- **CLEAR EXPLANATIONS** on process and rationale for the high-risk diagnoses
- **FOUNDATION** for improving data integrity and compliance policy

The Role of AI

The Promise of AI

- ✓ Assimilate massive amounts of data to stratify risk
- ✓ Translate patterns into patient insights faster than people can themselves
- ✓ Take on the heavy lift to get reliable insights to the provider at the point of care pre-encounter



Requirements for Success

- ✓ Well trained on clinical data
- ✓ Clinicians **and** coders need a seat at the table to ensure appropriate rules and configuration
- ✓ Machine Learning monitored and maintained to proactively identify potential issues
- ✓ Partner with your vendor for continuous improvement

Key Takeaways

1

Collaborate with Payer Provider Partners and Vendors

- Build a culture for proper and timely documentation and pt care
- Improve member health and quality outcomes by positioning early gap closure
- Focus on education and feedback

2

Develop checks and balances

- Policies & / or Procedures
- Acceptable diagnoses / treatments for in-home and telehealth
- One off diagnoses

3

Focus on member care and health outcomes

- Create / support excellent care givers and the documentation of their care — the rest will fall into place

QUESTIONS?

THANK YOU